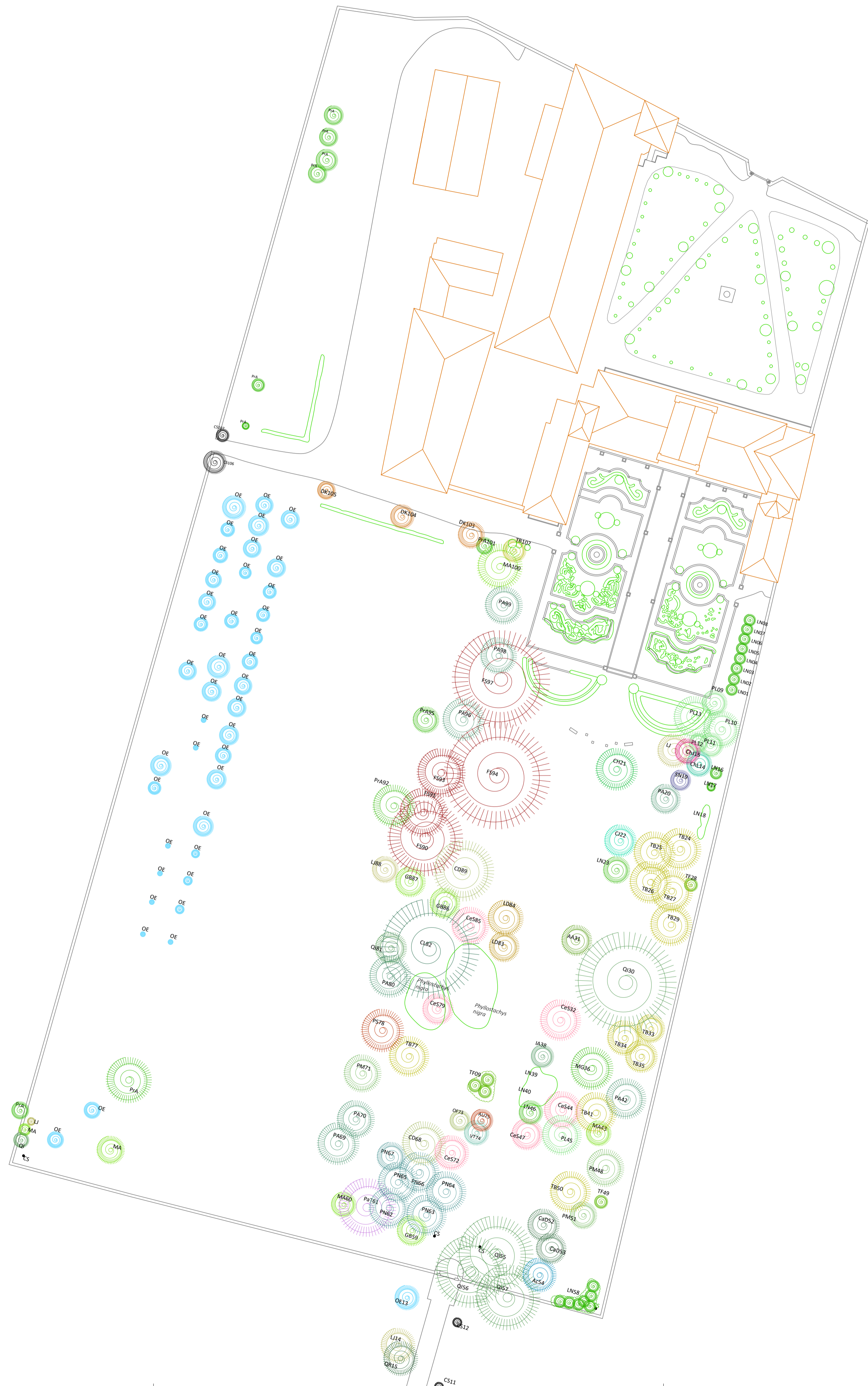


IL PROGETTISTA



Legenda

- | | |
|--------------------------------|--|
| AA Abies alba | OE Olea europaea |
| AB Abies balsamea | OF Osmanthus fragrans |
| AbC Abies cilicica | OH Osmanthus heterophyllus |
| AN Abies nordmanniana | PaT Pawlonia tomentosa |
| AC Acer spp. | Phyllostachys nigra |
| AcN Acer negundo | PS Photinia davidiana |
| Amp Ampelopsis | PA Picea abies |
| AE Araucaria excelsa | PPg Picea pungens "Glaucua" |
| AU Arbutus unedo | PPK Picea pungens "Kosteriana" |
| AJ Aucuba japonica | PH Pinus halapensis |
| BP Betula pendula | PN Pinus nigra |
| Buxus | PP Pinus pinea |
| CaD Calocedrus decurrens | PT Pittosporum tobira |
| Caryopteris incana | PoNIIT Populus nigra "Italica" |
| CD Cedrus deodara | PxC Populus x canadensis |
| CL Cedrus libani | PG Punica granatum |
| CH Cephalotaxus harringtonii | PrA Prunus avium |
| CeS Cercis Siliquastrum | PL Prunus laurocerasus |
| ChJ Chaenomeles | PM Pseudotsuga menziesii |
| ChL Chamaecyparis lawsoniana | QI Quercus ilex |
| CxL Citrus x limon | QR Quercus robur |
| Cortaderia selloana | RP Robinia pseudoacacia |
| CM Crataegus monogyna | RPu Robinia pseudoacacia "Umbraculifera" |
| CJ Cryptomeria japonica | Rose |
| CS Cupressus sempervirens | Sa Salix |
| DK Diospyros kaki | SN Sambucus nigra |
| ER Euonymus radicans | SG Sequoiadendron giganteum |
| FS Fagus Sylvatica | SJ Sophora japonica |
| FSp Fagus Sylvatica "Purpurea" | TB Taxus baccata |
| GB Ginkgo biloba | TG Thuja gigantea |
| IA Ilex aquifolium | TD Thujaopsis dolabrada |
| LD Larix decidua | TP Tilia platyphyllos |
| LN Laurus nobilis | TN Torreya nucifera |
| L Ligustrum japonicum | TF Trachycarpus fortunei |
| MG Magnolia grandiflora | VT Viburnum |
| Miscanthus sinensis "Zebrinus" | WS Wisteria sinensis |
| MA Morus Alba | YG Yucca gloriosa |